



SCANNING FOR NETWORKS - Quick Start Guide

Wireless Client Bridge and Easy Connect Modem – Scan for Networks such as bbx, Beacon Wi-Fi or any other 802.11b/g/n network which you wish to connect your system.

***This is only if you are trying to connect with a network different than bbx*

The Client Bridge and Easy Connect Modem are long range wireless Client Bridge that operates seamlessly in the 2.4GHz frequency and provides high bandwidth up to 108Mbps with Turbo G. It features high transmitted output power and high receivable sensitivity. High output power and high sensitivity can extend range and coverage to reduce the roaming between Hot Spots to get a more stable wireless connection.

This Guide will assist you in scanning for networks other than bbx and connecting the Client Bridge portion of your Networked Boat with other networks within your range:

A) IP Address Configuration to access your Client Bridge and Easy Connect Modem which has a default static IP of 192.168.1.254

Since the Client Bridge and Easy Connect Modem cannot issue your computer an IP (they are not routers) you must set a static IP on your computer that allows for direct connection. In order to log into this device, you must first connect your computer via Ethernet connection to the LAN connection of the device or the LAN connector of the POE device, then configure the TCP/IP settings of your PC/Notebook as follows:

1. (depending on your operating system version) In the control panel, double click Network Connections and then double click on the connection of your Network Interface Card (NIC) or click on Network Sharing, manage connections, Local Area Connection.
2. Select **Internet Protocol (TCP/IP)** and then click on the **Properties** button. This will allow you to configure the TCP/IP settings (version 4) of your PC/Notebook.
3. Select **Use the following IP Address** radio button and then enter the IP address (192.168.1.252) and subnet mask (255.255.255.0). Ensure that the IP address and subnet mask are on the same subnet as the device. (when finished programming your device, remember to reset settings to "obtain IP address automatically" for normal Internet use using your Ethernet

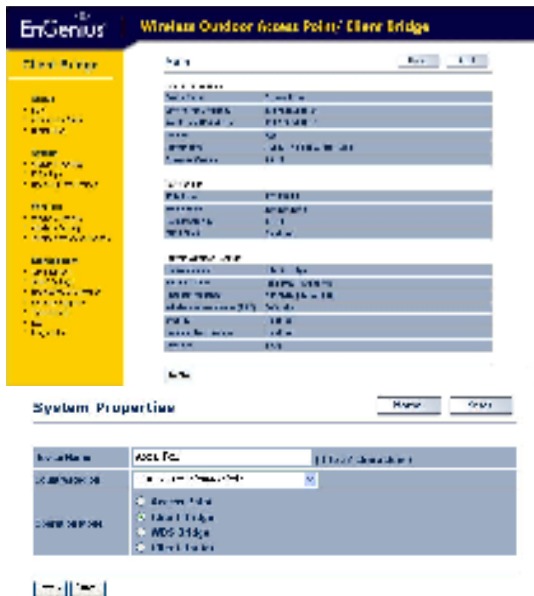
port or LAN connection)

4. Click on the **OK** button to close this window, and once again to close LAN properties window.

- To configure the device, open up your deisted web-browser, enter the IP address of the Client Bridge/EZ Connect (**default: 192.168.1.254**) into the address bar of the web-browser and press **Enter**.
- After connecting to the IP address, the web-browser will display the login page. Specify **bbx** as the default **User Name** and **bbx** as the default **Password**, and then click on the **Login** button.

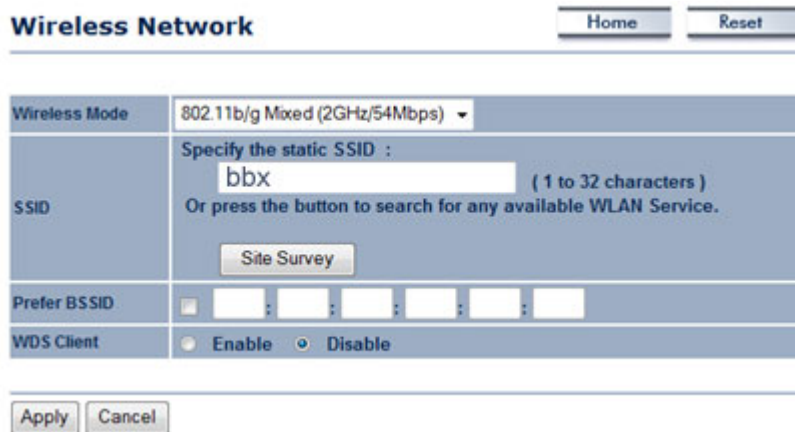


- You will reach a screen similar to the following screen shots, depending on your model.



B) Click on the Wireless Network Tab on the left

The **Wireless Network** page allows you to configure the wireless mode, channel, SSID, and security settings.



The "Wireless Network" configuration page includes a "Home" and "Reset" button at the top right. The main configuration area has the following fields:

- Wireless Mode:** 802.11b/g Mixed (2GHz/54Mbps)
- SSID:** Specify the static SSID : (1 to 32 characters)
Or press the button to search for any available WLAN Service.
- Prefer BSSID:** : : : : :
- WDS Client:** Enable Disable

At the bottom are "Apply" and "Cancel" buttons.

If you purchased your Client Bridge/EZ Connect Modem or Networked Boat to connect to a bbx network, you will see "bbx" saved as your static SSID. If you would like to connect to available networks that broadcast their SSID, click on Site Survey to have them listed.

Site Survey

2.4GHz Site Survey

:Infrastructure :Ad_hoc

BSSID	SSID	Channel	Signal	Type	Security	Network Mode
00:e0:4c:81:86:21	DinoNet	1	-86 dBm	B	WEP	<input type="checkbox"/>
00:13:77:c6:6f:43	SMC	6	-105 dBm	G	NONE	<input type="checkbox"/>

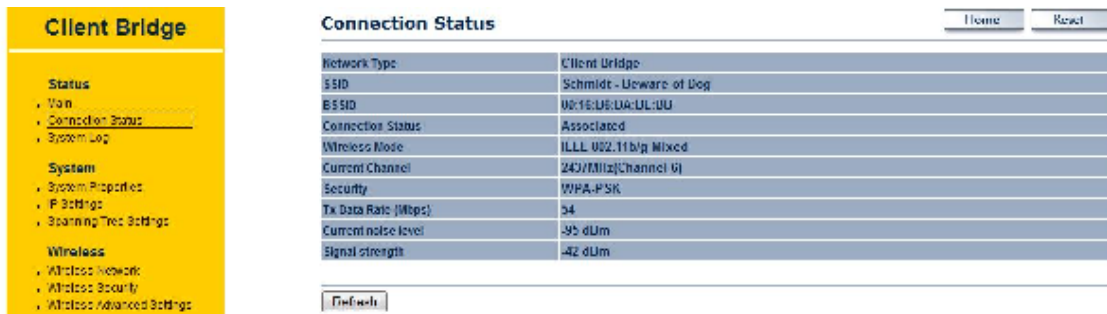
Click on the BSSID of your network of choice and you will see the network name and BSSID populate the SSID box, hit Apply to save.

Wireless Mode: Depending on the type of wireless clients that are connected to the network, you may select **B**, **G**, **B/G-mixed** or **Super-G**. If you are not sure about which clients will be accessing the wireless networks, it is recommended that you select **B/G-mixed** for the best performance.

C. Check your Connection Status

Click on the **Connection Status** link under the **Status** drop-down menu. This page displays the current status of the network, including network type, SSID, BSSID, connection status, wireless mode, current channel, security, data rate, noise level and signal strength.

Under Connection Status (below) you should see “associated” if your signal strength is within the range of your desired access point or Hot Spot. Once connected, your access point (that broadcasts your personal SSID) will automatically adjust to your new network’s settings.



Client Bridge

- Status
 - View
 - Connection Status**
 - System Log
- System
 - System Properties
 - IP Settings
 - Spanning Tree Settings
- Wireless
 - Wireless Network
 - Wireless Security
 - Wireless Advanced Settings

Connection Status Home Reset

Network Type	Client Bridge
SSID	Schmidt - Ueware of Dog
BSSID	08:1E:4E:0A:UL:0U
Connection Status	Associated
Wireless Mode	11LL 022.11b/g Mixed
Current Channel	242/Mixed(Channel 6)
Security	WPA-PSK
Tx Data Rate (Mbps)	54
Current noise level	-95 dBm
Signal strength	-42 dBm

D. Change the TCP/IP settings of your Local Area Network Connection back to “obtain and IP address automatically” if you plan on using your LAN connection to directly connect to a Client Bridge or EZ Connect Modem.

1. (depending on your operating system version) In the control panel, double click Network Connections and then double click on the connection of your Network Interface Card (NIC) or click on Network Sharing, manage connections, Local Area Connection.
2. Select **Internet Protocol (TCP/IP)** and then click on the **Properties** button. This will allow you to configure the TCP/IP settings (version 4) of your PC/Notebook.
3. Select **the** radio button to “obtain IP address automatically” so the router of the system that your Client Bridge or EZ Connect modem can issue your computer an IP from within their range
4. Click on the **OK** button to close this window, and once again to close LAN properties window.
5. Wait 20 seconds. If the wireless connection between your Client Bridge/EZ Connect Modem and the router broadcasting the SSID is sufficient, your computer that is connected via Ethernet to the Client Bridge/EZ Connect Modem will receive and IP address and you can enter the Internet.